

JUNE

2017

R2

Nationals 2014 Stage 1: Cobra Venom

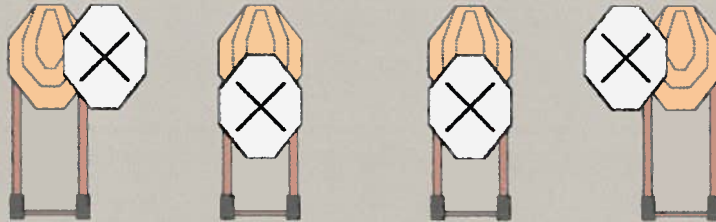
RULES: USPSA rule book, Latest Edition

COURSE DESIGNER: Jodi Humann

START POSITION: Standing inside the shooting area, facing downrange, both hands above shoulders. Handgun is loaded and holstered per 8.1.1 and 8.1.2.

STAGE PROCEDURE: Upon start signal engage targets T1-T4 with 2 rounds each, perform a mandatory reload, and engage T1-T4 with 2 round each from within the fault lines.

SCORING: SCORING: Virginia, 16 rounds, 80 points
TARGETS: 4 Classic
SCORED HITS: Best 4 per paper
START-STOP: Audible - Last shot
PENALTIES: Per current edition USPSA rule book



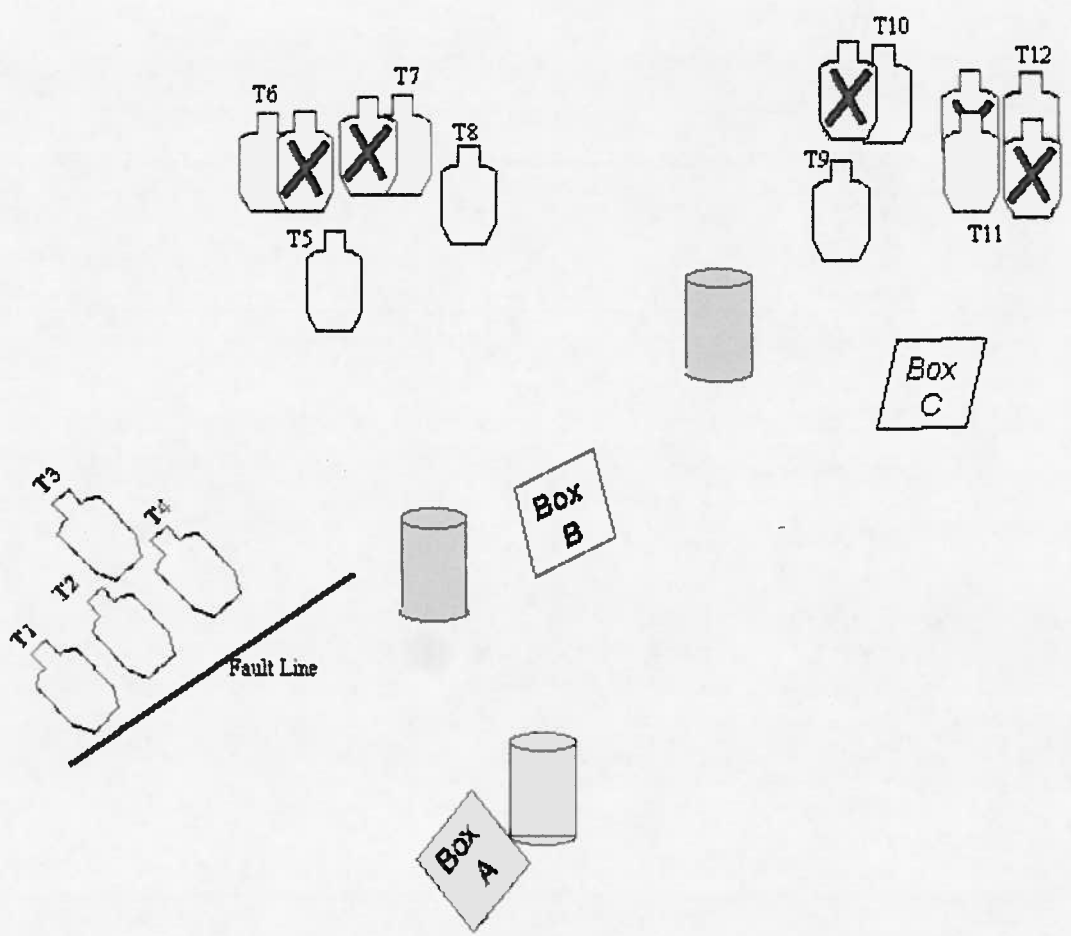
NOTES:

Tupelo Rain Day

RULES: Practical Shooting Handbook, Latest Edition **COURSE DESIGNER:** Jeff Maass L-1192

START POSITION: Standing in Box A, both palms flat on top of barrel.

STAGE PROCEDURE	SCORING
On signal, engage all targets. T5, T6, T7, and T8 may be engaged ONLY from inside Box B. Targets T9, T10, T11, and T12 may be engaged ONLY from inside Box C.	SCORING: Comstock, 24 rounds, 120 points TARGETS: 12 IPSC SCORED HITS: Best 2 per IPSC START-STOP: Audible - Last shot PENALTIES: Procedural. -10 No-shoot hit. -10 Miss. -10



SETUP NOTES:	RO NOTES:

STAGE# 1 ¹⁸ ROUNDS

steel & paper

Comstock STRINGS 1

4 PAPER 10 STEEL

Hands on X's

PCC: muzzle touching wall, below X's, ON-SAFE

PROCEDURE:

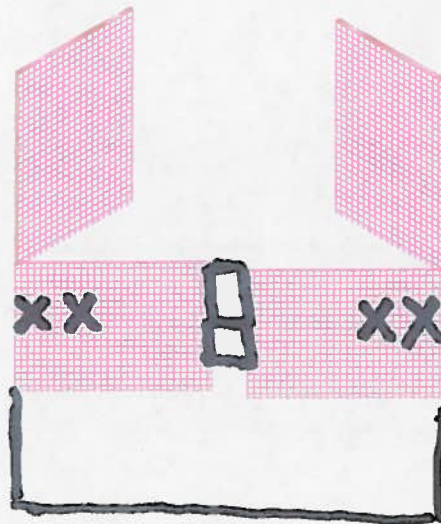
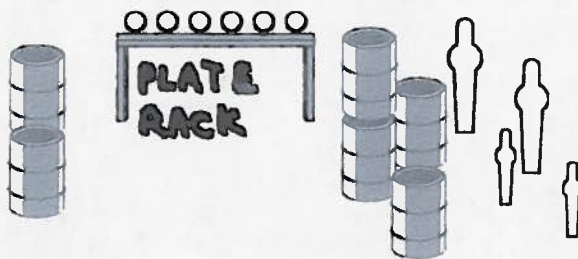
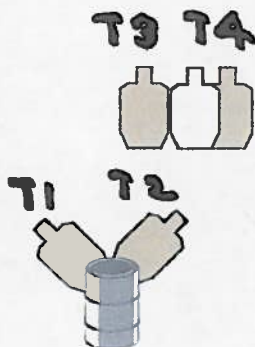
Shooters choice as to which side/ X's to start from.

On signal, engage targets as visible from within fault lines

STAGE SETUP NOTES:

Use wall's/barrels to limit view of targets/poppers from opposite side of wall

STEEL & PAPER



RANGE # 1

Heward / June

R1

Here, Shoot This

RULES: Practical Shooting Handbook, Latest Edition **COURSE DESIGNER:** Bill Noyes, A-6512

START POSITION: Standing in Box A, facing downrange, hands relaxed at sides

PCC: Standing in Box A, facing downrange, Low-Ready, ON-SAFE

STAGE PROCEDURE

On signal, draw and engage targets as they become available.

SCORING

SCORING: Comstock, 20 rounds, 100 points

TARGETS: 10 IPSC

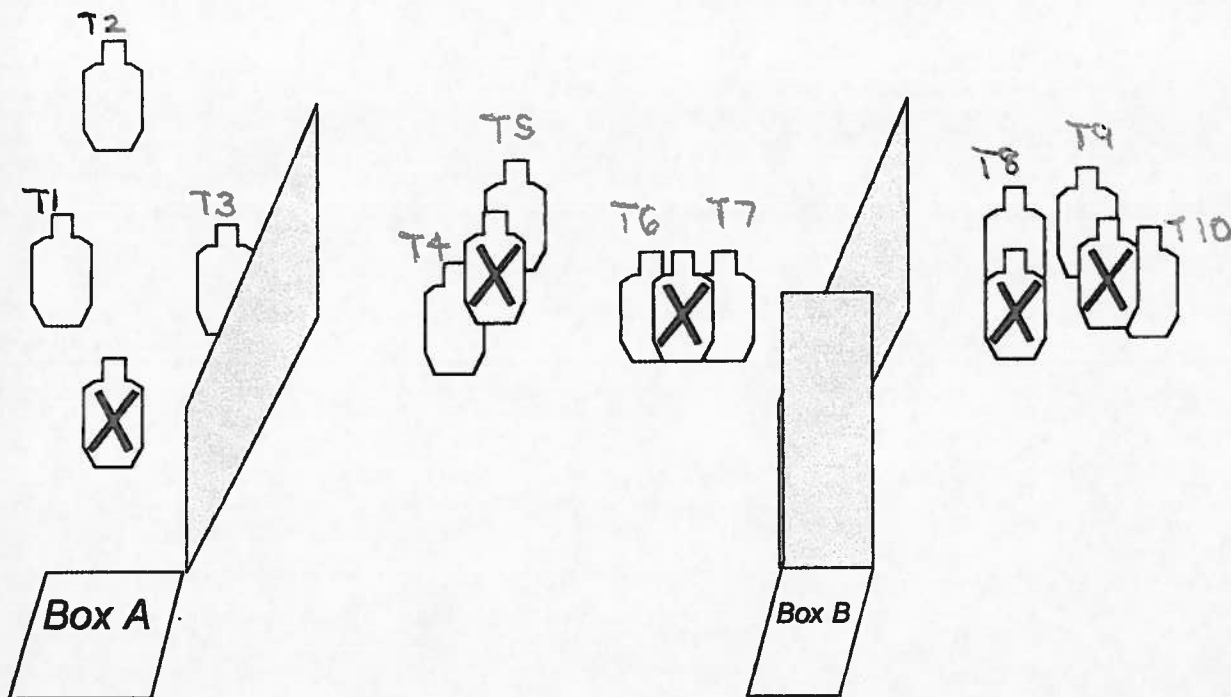
SCORED HITS: Best 2 per IPSC

START-STOP: Audible - Last shot

PENALTIES: Procedural. -10

No-shoot hit. -10

Miss. -10



SETUP NOTES:

Use wall to limit view of T4--T7 from Box A, and use wall to limit view of T8--T10 to Box B

RO NOTES:

6/17/17
J. Boller
R5



RULES: USPSA Handgun Competition Rules, current edition **COURSE DESIGNER:** Andy Hollar — Modifications by US Design Team

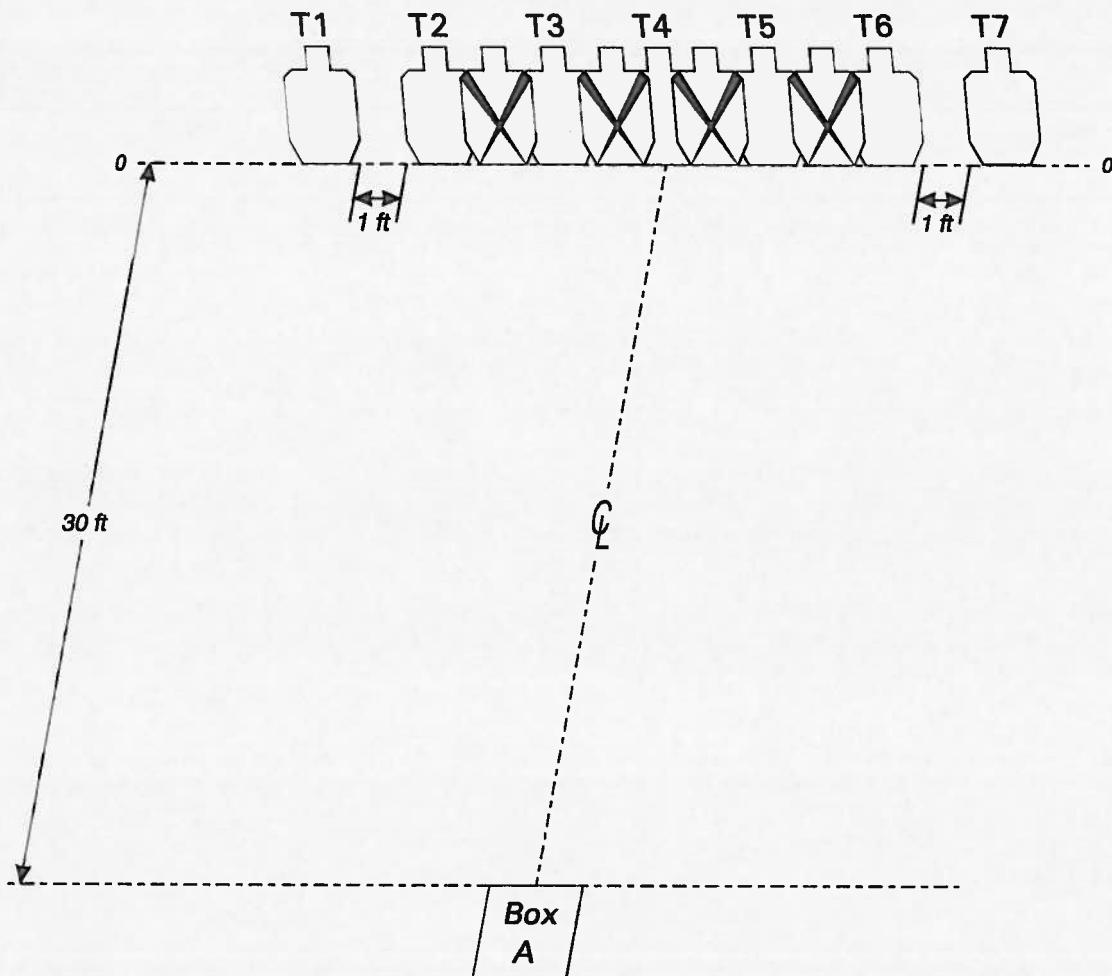
START POSITION: Standing in Box A facing targets, wrists above respective shoulders. Handgun is loaded and holstered as per ready condition in rule 8.1.1 and 8.1.2.

STAGE PROCEDURE

Upon start signal, from Box A only, engage T1-T7 with only one round per target, perform a mandatory reload and reengage T1-T7 with only one round per target.

SCORING

SCORING: Virginia Count, 14 rounds, 70 points
TARGETS: 7 Metric
SCORED HITS: Best 2/paper
START - STOP: Audible - Last shot
PENALTIES: Per current edition USPSA Handgun Competition Rules
Failure to perform mandatory reload will result in one procedural penalty per shot fired.



SETUP NOTES: Targets are set to 5 feet high at shoulders. T4 is centered on centerline. T1 is one foot left of T2 non-scoring edge. T7 is one foot right of T6 non-scoring edge. No-shoot between T2 and T3 is set so perforation overlays the C zone perforation on T2 and T3. No-shoot



between T5 and T6 is set so perforation overlays the C zone perforation on T5 and T6. No-shoots between T3 and T4 and between T4 and T5 are set so the perforation overlays the A zone perforations on T4 and C zone perforations on T3 and T5. Shooting box is 3 feet by 3 feet.

TBD